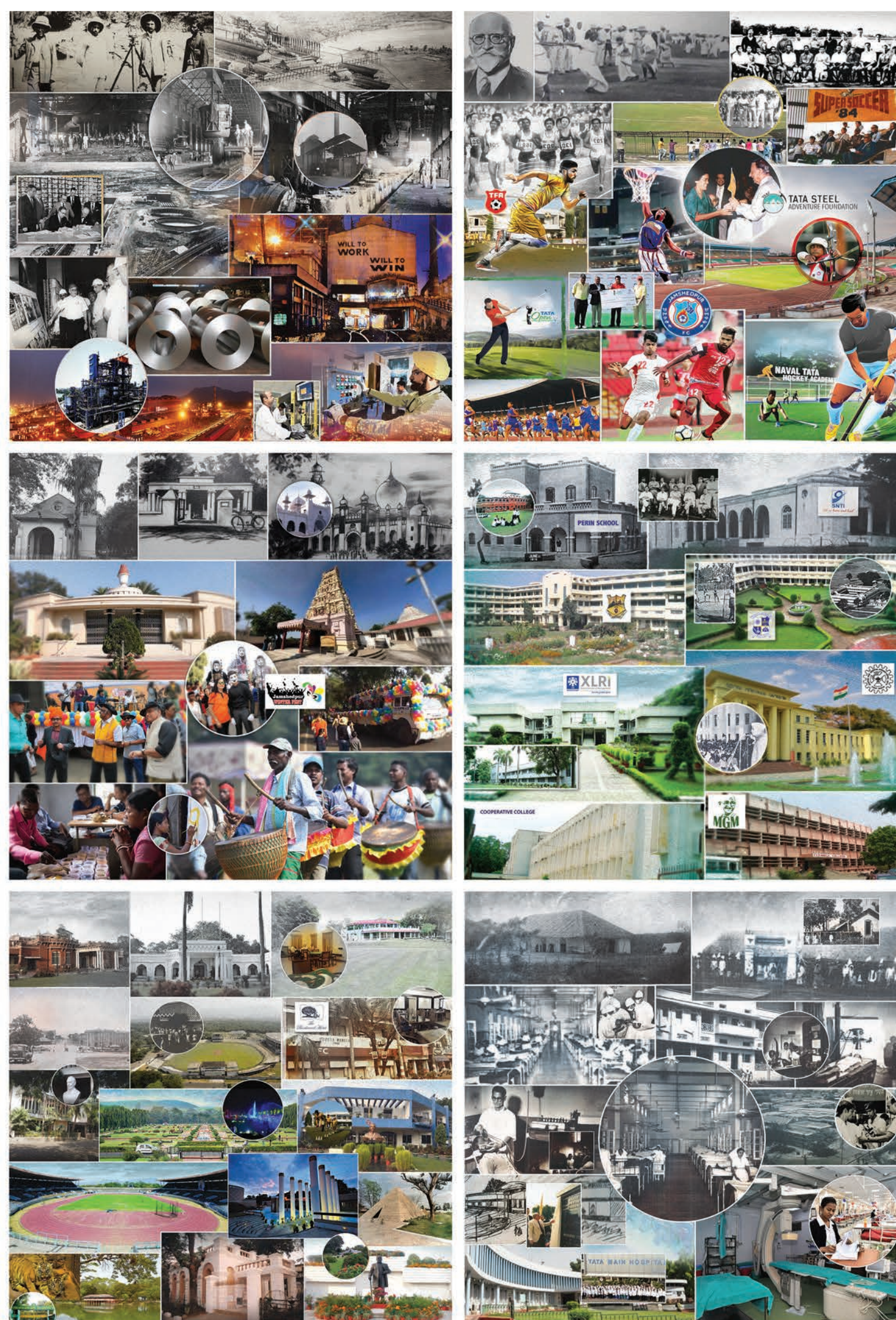
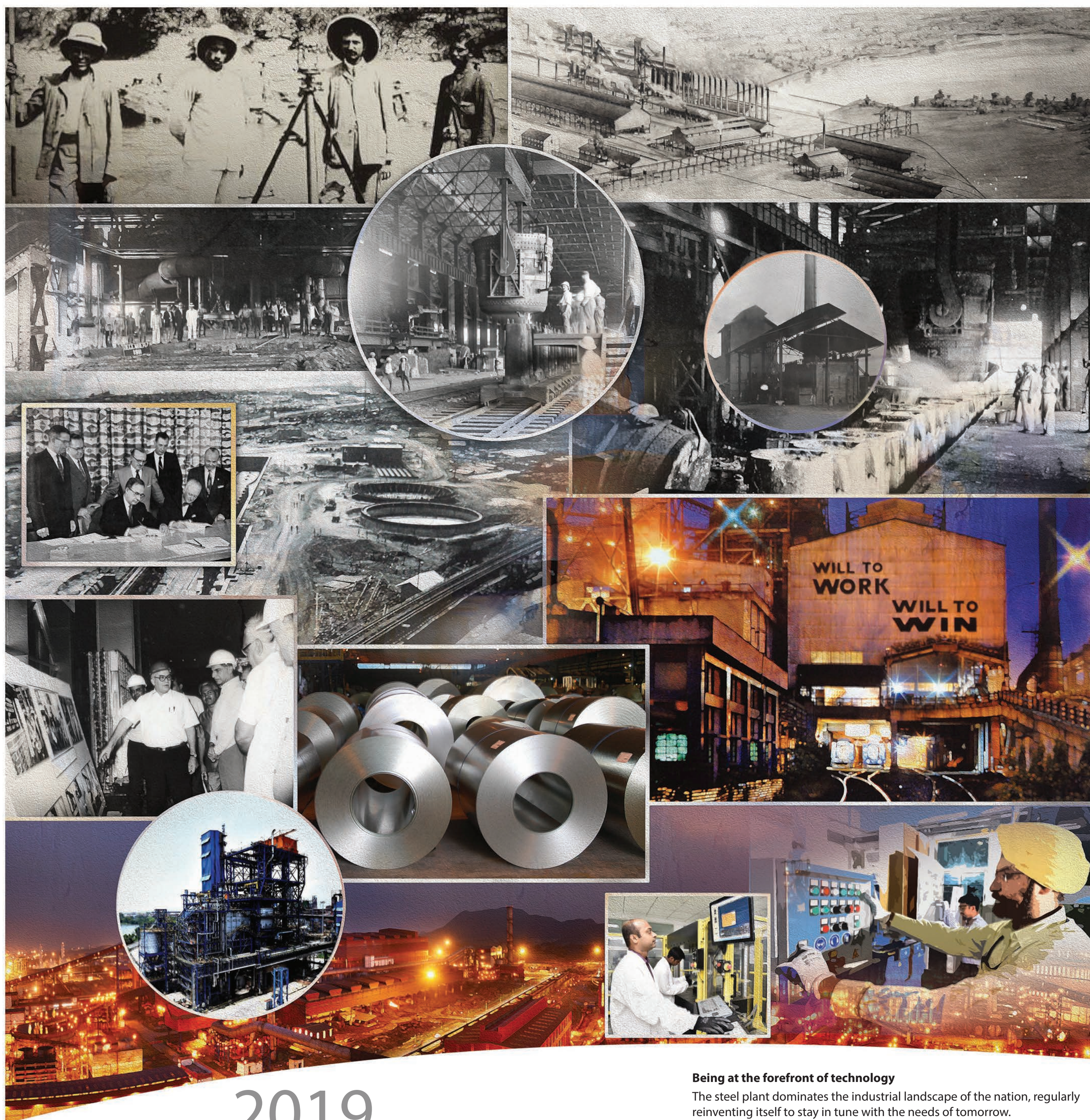


2019



Jamshedpur, considered an urban Utopia, was born from its founder Jamsetji Nusserwanji Tata's vision for a better tomorrow. The celebration of its centenary is a salute to inclusive development. Even after a hundred years, the city champions progressive outlook. As a world-class thriving green city, it continues to set the pace for a sustainable tomorrow.





**Being at the forefront of technology**

The steel plant dominates the industrial landscape of the nation, regularly reinventing itself to stay in tune with the needs of tomorrow.

2019

**JANUARY**

| SUN | MON | TUE | WED | THU | FRI | SAT |
|-----|-----|-----|-----|-----|-----|-----|
|     |     | 1   | 2   | 3   | 4   | 5   |
| 6   | 7   | 8   | 9   | 10  | 11  | 12  |
| 13  | 14  | 15  | 16  | 17  | 18  | 19  |
| 20  | 21  | 22  | 23  | 24  | 25  | 26  |
| 27  | 28  | 29  | 30  | 31  |     |     |

**FEBRUARY**

| SUN | MON | TUE | WED | THU | FRI | SAT |
|-----|-----|-----|-----|-----|-----|-----|
|     |     |     |     |     | 1   | 2   |
| 3   | 4   | 5   | 6   | 7   | 8   | 9   |
| 10  | 11  | 12  | 13  | 14  | 15  | 16  |
| 17  | 18  | 19  | 20  | 21  | 22  | 23  |
| 24  | 25  | 26  | 27  | 28  |     |     |







**Sports, a way of life**  
The finest infrastructure and world-class training centres continue to nurture talent, often from the grassroots, and enable champions of tomorrow.

# 2019

## MARCH



| SUN | MON | TUE | WED | THU | FRI | SAT |
|-----|-----|-----|-----|-----|-----|-----|
| 31  |     |     |     |     | 1   | 2   |
| 3   | 4   | 5   | 6   | 7   | 8   | 9   |
| 10  | 11  | 12  | 13  | 14  | 15  | 16  |
| 17  | 18  | 19  | 20  | 21  | 22  | 23  |
| 24  | 25  | 26  | 27  | 28  | 29  | 30  |

## APRIL

| SUN | MON | TUE | WED | THU | FRI | SAT |
|-----|-----|-----|-----|-----|-----|-----|
|     | 1   | 2   | 3   | 4   | 5   | 6   |
| 7   | 8   | 9   | 10  | 11  | 12  | 13  |
| 14  | 15  | 16  | 17  | 18  | 19  | 20  |
| 21  | 22  | 23  | 24  | 25  | 26  | 27  |
| 28  | 29  | 30  |     |     |     |     |







**Celebrating perfect harmony**  
Sparkling with diversity, the city is home to festivals and landmarks of many faiths that co-exist to signify a tomorrow without boundaries.

# 2019



## MAY

| SUN | MON | TUE | WED | THU | FRI | SAT |
|-----|-----|-----|-----|-----|-----|-----|
|     |     |     | 1   | 2   | 3   | 4   |
| 5   | 6   | 7   | 8   | 9   | 10  | 11  |
| 12  | 13  | 14  | 15  | 16  | 17  | 18  |
| 19  | 20  | 21  | 22  | 23  | 24  | 25  |
| 26  | 27  | 28  | 29  | 30  | 31  |     |

## JUNE

| SUN | MON | TUE | WED | THU | FRI | SAT |
|-----|-----|-----|-----|-----|-----|-----|
| 30  |     |     |     |     |     | 1   |
| 2   | 3   | 4   | 5   | 6   | 7   | 8   |
| 9   | 10  | 11  | 12  | 13  | 14  | 15  |
| 16  | 17  | 18  | 19  | 20  | 21  | 22  |
| 23  | 24  | 25  | 26  | 27  | 28  | 29  |







2019

**JULY**

| SUN | MON | TUE | WED | THU | FRI | SAT |
|-----|-----|-----|-----|-----|-----|-----|
|     | 1   | 2   | 3   | 4   | 5   | 6   |
| 7   | 8   | 9   | 10  | 11  | 12  | 13  |
| 14  | 15  | 16  | 17  | 18  | 19  | 20  |
| 21  | 22  | 23  | 24  | 25  | 26  | 27  |
| 28  | 29  | 30  | 31  |     |     |     |

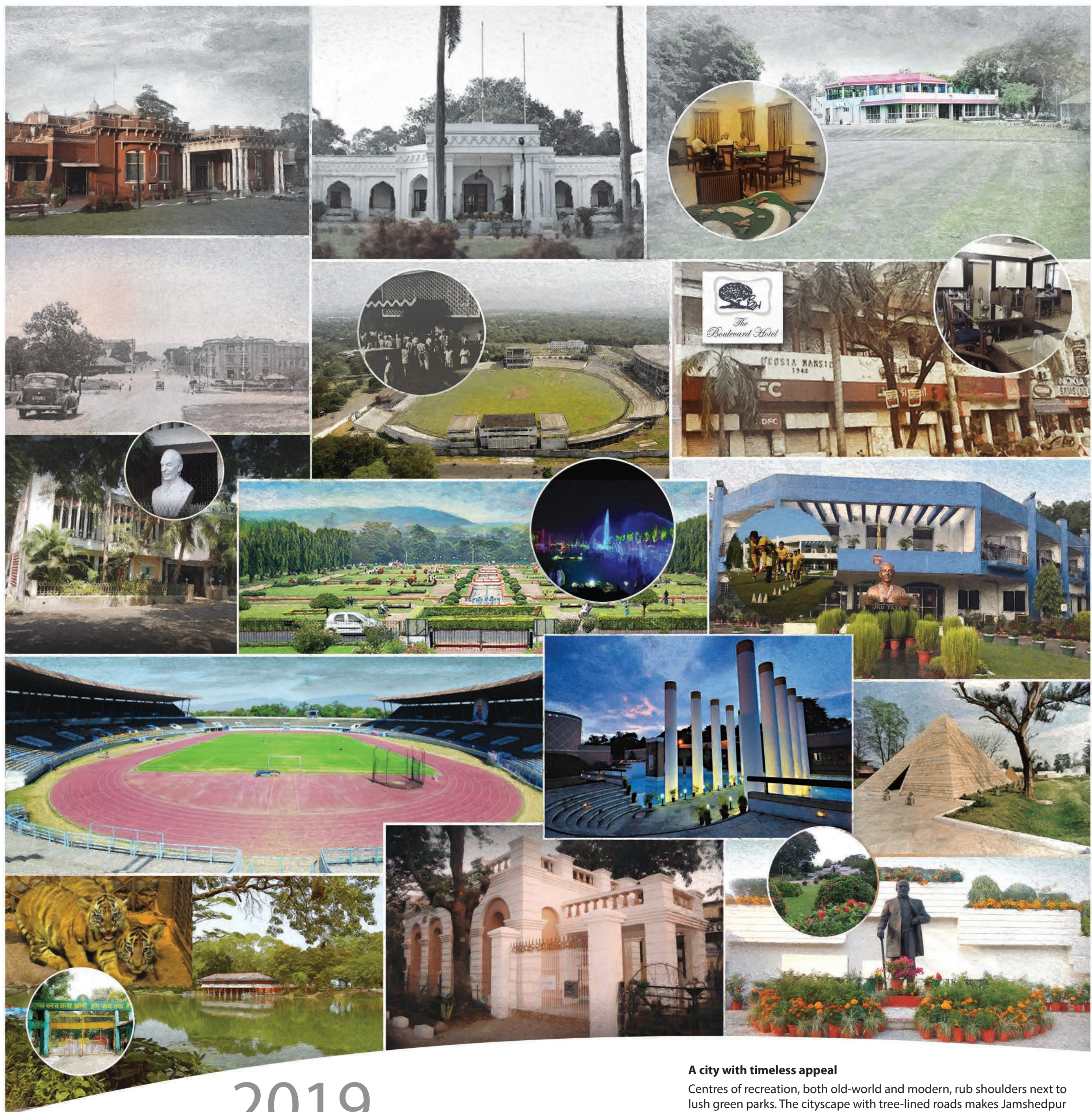
**AUGUST**

| SUN | MON | TUE | WED | THU | FRI | SAT |
|-----|-----|-----|-----|-----|-----|-----|
|     |     |     |     | 1   | 2   | 3   |
| 4   | 5   | 6   | 7   | 8   | 9   | 10  |
| 11  | 12  | 13  | 14  | 15  | 16  | 17  |
| 18  | 19  | 20  | 21  | 22  | 23  | 24  |
| 25  | 26  | 27  | 28  | 29  | 30  | 31  |

**Nurturing knowledge**  
A cradle of education from its earliest days, the schools, colleges and institutes of the city mould minds, inspiring them to imagine a better tomorrow.







**A city with timeless appeal**

Centres of recreation, both old-world and modern, rub shoulders next to lush green parks. The cityscape with tree-lined roads makes Jamshedpur a champion of tomorrow.

**2019**

**SEPTEMBER**

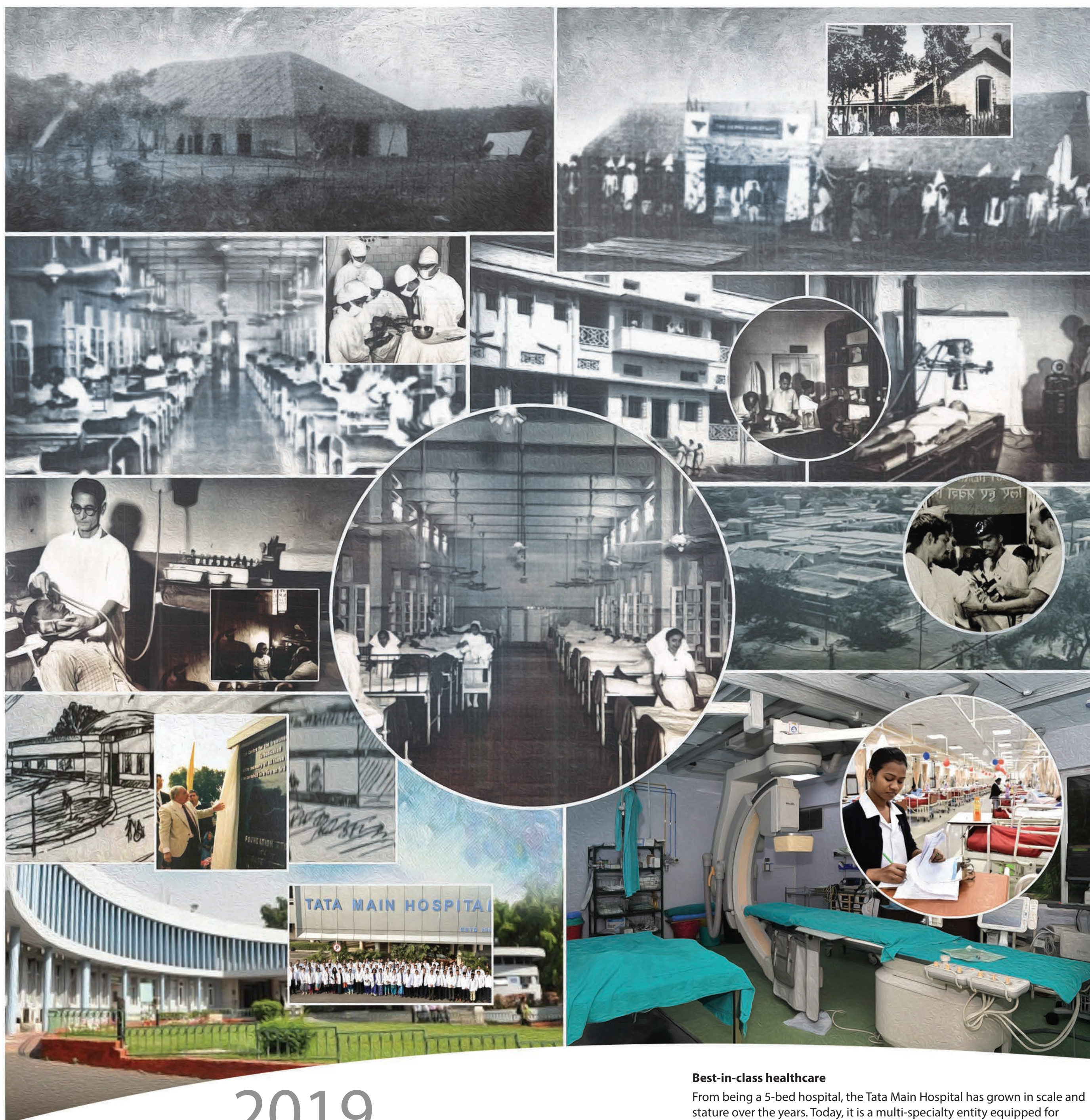
| SUN | MON | TUE | WED | THU | FRI | SAT |
|-----|-----|-----|-----|-----|-----|-----|
| 1   | 2   | 3   | 4   | 5   | 6   | 7   |
| 8   | 9   | 10  | 11  | 12  | 13  | 14  |
| 15  | 16  | 17  | 18  | 19  | 20  | 21  |
| 22  | 23  | 24  | 25  | 26  | 27  | 28  |
| 29  | 30  |     |     |     |     |     |

**OCTOBER**

| SUN | MON | TUE | WED | THU | FRI | SAT |
|-----|-----|-----|-----|-----|-----|-----|
|     |     | 1   | 2   | 3   | 4   | 5   |
| 6   | 7   | 8   | 9   | 10  | 11  | 12  |
| 13  | 14  | 15  | 16  | 17  | 18  | 19  |
| 20  | 21  | 22  | 23  | 24  | 25  | 26  |
| 27  | 28  | 29  | 30  | 31  |     |     |







## NOVEMBER

| SUN | MON | TUE | WED | THU | FRI | SAT |
|-----|-----|-----|-----|-----|-----|-----|
|     |     |     |     |     | 1   | 2   |
| 3   | 4   | 5   | 6   | 7   | 8   | 9   |
| 10  | 11  | 12  | 13  | 14  | 15  | 16  |
| 17  | 18  | 19  | 20  | 21  | 22  | 23  |
| 24  | 25  | 26  | 27  | 28  | 29  | 30  |

# DECEMBER

| SUN | MON | TUE | WED | THU | FRI | SAT |
|-----|-----|-----|-----|-----|-----|-----|
| 1   | 2   | 3   | 4   | 5   | 6   | 7   |
| 8   | 9   | 10  | 11  | 12  | 13  | 14  |
| 15  | 16  | 17  | 18  | 19  | 20  | 21  |
| 22  | 23  | 24  | 25  | 26  | 27  | 28  |
| 29  | 30  | 31  |     |     |     |     |



To know more  
<http://bit.ly/TSCalendar2019>

